

Do you like the way we market property?

The information age is here, but most local Realtors still sell homes the same way they did 20 years ago. When you want the highest purchase price possible in the shortest period of time, you want representation who knows how to make your home shine where nearly every buyer is looking for homes -- the internet.

The real estate team at DublinRanchLifestyle.com thinks differently. We focus on making your home unique in the marketplace, and we go for that emotional hook that gets results for you. Speaking of results... in 2009 our listings were on the market for an average of only 28 days and sold for an average of 104% of their asking price!

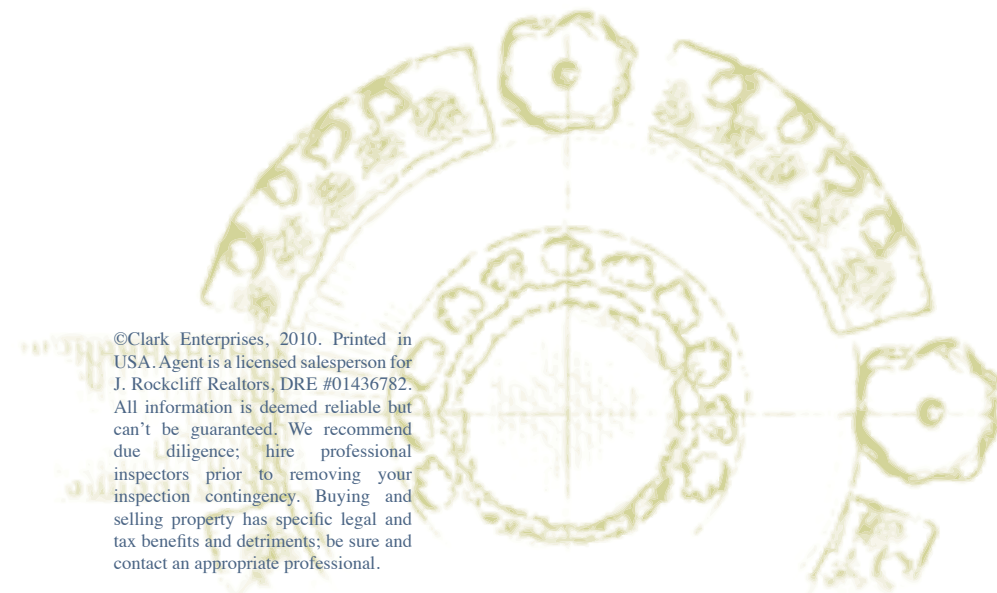
To learn more, go to <http://www.dublinranchlifestyle.com/our-philosophy>. Or, to speak with a friendly property marketing representative, call us today at 925.230.8375.



856 Mulberry Court, Richmond CA 94804



DRLS
dublin ranch *lifestyle*
Roger A. Clark, REALTOR®
4101 Dublin Blvd. Suite F-506
Dublin, CA 94806
925.230.8375 (direct)
www.DublinRanchLifestyle.com



©Clark Enterprises, 2010. Printed in USA. Agent is a licensed salesperson for J. Rockcliff Realtors, DRE #01436782. All information is deemed reliable but can't be guaranteed. We recommend due diligence; hire professional inspectors prior to removing your inspection contingency. Buying and selling property has specific legal and tax benefits and detriments; be sure and contact an appropriate professional.

DRLS
dublin ranch *lifestyle*

Executive, Country Club Living with a “Park-Sized” Backyard!



6 bedrooms

3 bathrooms

**3086 sq. ft.
residence**

10,360 sq. ft. lot

Built in 2003

As the name suggests, the Richmond Country Club Vista is a serene hillside community that overlooks San Pablo Bay. The most exclusive neighborhood of the Richmond Country Club, residents here are right next door to the fantastic, members-only, 18-hole course. The area features newer homes, with contemporary architectural styles, and with spacious floorplans that make living and entertaining enjoyable for you and your family.

The Richmond Country Club is in close proximity to two of the best shopping destinations in the Bay Area. Emeryville is only a fifteen minute drive down 580, and is home to the world-famous IKEA and the fantastic Bay Street shopping and entertainment destination. Organized in three city blocks connected by a main street, Bay Street houses an AMC Movie Theater with fifteen screens, PotteryBarn, Coach, Elephant Bar, Banana Republic, West Elm, and P.F. Chang's China Bistro to name a few.



A quick trip up 580 and over the Richmond Bridge brings you to Corte Madera, home to the premier mall of Marin County. Anchored by Macy's and Nordstrom, the Village is home to Williams Sonoma, J. Crew, Restoration Hardware, an Apple Store, and over 50 other specialty shops and stores. Of course, nothing rivals shopping in San Francisco, which (with good traffic) is only a 30-minute drive over the Bay Bridge.

- *One of the largest lots in all of Richmond Country Club -- a “park-sized” backyard!*
- *Highly popular “Pebble Beach” floorplan flows well for easy, family-style living.*
- *Two-story formal areas with connected library/study and dramatic chandeliers.*
- *Cozy family areas with kitchen/family combo and gas fireplace.*
- *Quiet, executive neighborhood with breezes of San Pablo Bay.*

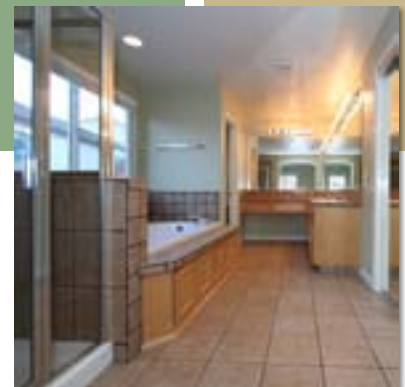
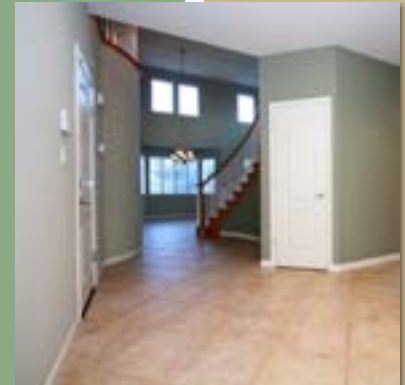
856 Mulberry Court is a fantastic, executive-level living space in prestigious Richmond Country Club Vista. Locals know this floorplan as the “Pebble Beach” model, and it remains one of the most popular in this subdivision.

Enter the home through the double entry doors and be drawn into an incredible, two-story formal area with filtered sunlight streaming from floor-to-ceiling windows. From here, a spiral staircase connects to the second level wrap-around bannister with a loft-office area. A “Juliet” balcony feature gives this space a dramatic, architectural counter-point. Distressed, travertine-style tiles are used on the lower level, and they are a feast for the eyes. Maple cabinetry and plantation shutters, along with a warm, custom color scheme, lend a model home feel with a look that accentuates the architectural interest of the volume ceilings.

Exit the rear of the home through the kitchen, family room area and enter the expansive yard space. One of the largest lots in the Richmond Country Club, the nearly one quarter acre of space will provide you and your family years of enjoyment. With plenty of room for a pool, hot tub children's play area and more, the opportunity is yours to create the backyard oasis of your dreams.

Through yet another set of double doors, enter the master bedroom suite -- your personal oasis. This incredible space sits on the northeast corner of the house, where dawn sunlight will gently awaken you as it peaks over the East Bay hills. Relax in your jetted soaking tub, or curl up with a magazine in the sitting area. The large, walk-in closet will allow you to organize your life as you see fit, and you will enjoy preparing for your day with sinks for both of you and with a comfortable makeup area.

Your family will feel right at home at 856 Mulberry, and you will enjoy an executive lifestyle in a home that's close to just about everything. Call (925) 230-8375 to speak with a friendly real estate marketing representative, and to submit your offer today!



**For up to the minute pricing and status information, please visit
<http://www.dublinranchlifestyle.com/856-mulberry-court>.**